

10 PM Current Affairs Quiz Compilation

10th to 15th October, 2022

PRELIMS

Q.1) With reference to e-rupee recently proposed by the RBI consider the following statements:

1. There will be two types of e-rupee where wholesale will be for interbank settlement and retail for the public.
2. It will be issued and distributed by the RBI.

Which of the statements given above is/are correct?

- a) 1 only
- b) 2 only
- c) Both 1 and 2
- d) Neither 1 nor 2

Answer: A

Explanation – The RBI has come up with the proposal of the e-rupee that will soon be launched. There will be two types of e-rupee where wholesale is for interbank settlement and retail is for the public.

Statement 2 is incorrect. E-rupee will be issued by the RBI but distributed by the commercial banks.

Source: <https://timesofindia.indiatimes.com/business/india-business/all-you-need-to-know-about-indias-soon-to-be-launched-e-rupee/articleshow/94755651.cms>

Q.2) With reference to Foreign Direct Product Rule (FDPR) consider the following statements:

1. It controls trading of US technologies even manufactured in other countries.
2. It helps in importing foreign products at a low tariff rate.

Select the correct answer using the codes given below:

- a) 1 only
- b) 2 only
- c) Both 1 and 2
- d) Neither 1 nor 2

Answer: A

Explanation –

The provision called the foreign direct product rule, or FDPR, was first introduced in 1959 to control trading of US technologies. It essentially says that if a product was made using American technology, the US government has the power to stop it from being sold – including products made in a foreign country. It has been recently applied to China.

Source: <https://indianexpress.com/article/explained/explained-global/us-fdpr-china-curbs-tech-sector-supercomputer-8197353/>

Q.3) Which of the following statements is not correct about the Niger River?

- a) It is the third longest river of Africa.
- b) It passes through Guinea and Mali.
- c) Benue River is its main tributary.
- d) It drains its water in the Mediterranean Sea.

Answer: D

Explanation –

10 PM Compilation for the Month of October, (Second Week) 2022

Niger River drains its water in the Atlantic Ocean.

Source: <https://www.thehindu.com/news/international/at-least-76-dead-after-boat-capsizes-in-nigerias-anambra/article65991141.ece>

Q.4) With reference to Graded Response Action Plan (GRAP) consider the following statements;

1. It is a set of emergency measures to prevent further deterioration of air quality once it reaches a certain threshold.
2. Stage 1 of GRAP is activated when the AQI is in the very poor category.

Which of the statements given above is/are correct?

- a) 1 only
- b) 2 only
- c) Both 1 and 2
- d) Neither 1 nor 2

Answer: A

Explanation –

Statement 1: Graded Response Action Plan (GRAP) is a set of emergency measures to prevent further deterioration of air quality once it reaches a certain threshold. It is being implemented by The Commission for Air Quality Management (CAQM) .

Statement 2: The statement is incorrect. Stage 1 of GRAP is activated when the AQI is in the poor category.

Source: <https://indianexpress.com/article/explained/explained-climate/grap-delhi-ncr-air-pollution-control-explained-8192952/>

Q.5) The terms Solidity, Rust, Haskell, was recently seen in news, is related to which of the following?

- a) Artificially formed Gem stones
- b) New names of Cheetah's introduced in India
- c) Programming languages of crypto platforms
- d) Independent movements in China and Russia in support of democracy

Answer: C

Programming languages help crypto platforms and protocols run effectively. Solidity is the programming language mainly used on the blockchain platform Ethereum. Parts of the Ethereum ecosystem also support several other programming languages such as Python, Ruby, Rust, Java, and more.

Blockchains such as Solana blockchain, The Polkadot blockchain uses Rust. Cardano's smart contract programming language is based on Haskell.

Source: [The Hindu](https://www.thehindu.com/news/international/at-least-76-dead-after-boat-capsizes-in-nigerias-anambra/article65991141.ece)

10 PM Compilation for the Month of October, (Second Week) 2022

Q.6) With reference to Sustainable finance, consider the following statements;

1. It refers to any form of financial services that is focused on fulfilling sustainable development goals.
2. CK Mishra committee is related to sustainable finance activities.

Which of the statements given above is/are correct?

- a) 1 only
- b) 2 only
- c) Both 1 and 2
- d) Neither 1 nor 2

Answer: B

Statement 1 is incorrect: It refers to any form of financial service integrating environmental, social and governance(ESG) criteria into the business or investment decisions for the lasting benefit of both clients and society at large.

Statement 2 is correct: A “committee of experts on sustainable finance” was constituted by International Financial Services Centres Authority (IFSCA) at the GIFT City. The committee was headed by CK Mishra, former secretary, Union Ministry of Environment, Forest and Climate Change.

Source: [Indian Express](#)

Q.7) Which of the following Village has recently become India’s first 24×7 solar-powered village?

- a) Konark, Odisha
- b) Modhera, Gujarat
- c) Martand, Kashmir
- d) Vandalur, Chennai

Answer: B

Recently, Prime Minister declared Modhera in Gujarat’s Mehsana district as India’s first 24×7 solar-powered village.

Source: [AIR](#)

Q.8) With reference to Rosetta Stone, consider the following statements;

1. It is a large stone slab with inscriptions in three scripts on it.
2. The stone belongs to Egypt and at present located in the UK.

Which of the statements given above is/are correct?

- a) 1 only
- b) 2 only
- c) Both 1 and 2
- d) Neither 1 nor 2

Answer: C

Both the statements are correct.

The Rosetta Stone is a large stone slab with inscriptions on it and is believed to be a piece of a bigger rock. It has inscriptions in three scripts, all of which convey a decree or public message. The stone belongs to Egypt and at present located in the UK. Many Egypt historians are demanding the U.K to return the 2,000-year-old Rosetta Stone.

Source: [Indian Express](#)

Q.9) Which of the following statement is/are correct about super apps?

1. These apps offer a suite of services for users within one app.
2. These apps are more popular in the UK and the USA.
3. Super apps increase the possibility of a monopoly.

Select the correct answer from the codes given below;

- a) 1 and 2 only
- b) 2 and 3 only
- c) 1 and 3 only
- d) 1, 2 and 3

Answer: C

Statement 1 is correct: A super app has been described as the Swiss army knife of mobile apps, offering a suite of services for users such as messaging, social networking, peer-to-peer payments and e-commerce shopping.

Statement 2 is incorrect: These mega super apps are widely used in Asia because mobile is the main form of access to the internet for many people in the region.

Due to their concerns, super apps have not picked pace in countries such as the US, Europe and the UK.

Statement 3 is correct: Super apps have the following concerns. Such as a) They increase the possibility of a monopoly, b) They have concerns about privacy in cases where a super app has onboarded third-party service providers.

Source: [Indian Express](#)

Q.10) With reference to symbol disputes between political parties, consider the following statements;

1. The ECI usually conducts the test of majority to resolve a symbol dispute.
2. Splinter group of the party, other than the group that got the party symbol, can be declared as a state party based on their substantial presence in that particular state.

Which of the statements given above is/are correct?

- a) 1 only
- b) 2 only
- c) Both 1 and 2
- d) Neither 1 nor 2

Answer: A

Statement 1 is correct: The ECI usually conduct the test of majority to resolve a symbol dispute. In almost all disputes decided by the EC so far, a clear majority of party delegates/office bearers, MPs and MLAs have supported one of the disputing factions.

Whenever the EC could not test the strength of rival groups based on support within the party organisation, it fell back on testing the majority only among elected MPs and MLAs.

Statement 2 is incorrect: Prior to 1997, the EC will assess the splinter group of the party — other than the group that got the party symbol. They will be considered as a recognised party, if they have a substantial presence in some states and satisfied the criteria fixed for recognition of parties under Paras 6 and 7 of the Symbols Order.

In 1997, the EC introduced a new rule under which the splinter group of the party — other than the group that got the party symbol — had to register itself as a separate party, and could lay claim to national or state party status only on the basis of its performance in the state or central elections after registration.

Source: [Indian Express](#)

PRELIMS

Q.1) With reference to the Red Sea consider the following statements:

1. It lies between Asia and Africa.
2. Reef systems are better developed along the sea because of its greater depths and an efficient water circulation pattern.
3. Egypt borders the sea from the east.

Which of the statements given above are correct?

- a) 1 and 2 only
- b) 2 and 3 only
- c) 1 and 3 only
- d) 1, 2 and 3

Answer: A

Explanation –

Statement 1: The Red Sea lies between Asia and Africa.

Statement 2: Reef systems are better developed along the sea because of its greater depths and an efficient water circulation pattern.

Statement 3: The statement is incorrect. The six countries bordering the Red Sea are – Eastern shore: Saudi Arabia and Yemen Yemen and Western shore: Egypt, Sudan, Eritrea and Djibouti.

Source: <https://www.thehindu.com/sci-tech/energy-and-environment/heat-resilient-red-sea-reefs-offer-last-stand-for-corals/article65991661.ece>

Q.2) With reference to coral reefs consider the following statements:

1. The biggest coral reefs are generally found in water of the tropics and subtropics.
2. The Great Barrier Reef in Australia is the largest coral reefs in the world.
3. Barrier reef grows seaward directly from the shore.

Which of the statements given above are correct?

- a) 1 and 3 only
- b) 2 and 3 only
- c) 1 and 2 only
- d) 1, 2 and 3

Answer: A

Explanation –

Statement 1: Big coral reefs are mostly found in the clear and shallow water of the tropic and sub tropics.

Statement 2: The Great Barrier Reef in Australia is the largest coral reefs in the world.

Statement 3; The statement is incorrect. Barrier reef does not grow directly out from the shore but they are separated from land by an expanse of water.

Source: <https://www.thehindu.com/sci-tech/energy-and-environment/heat-resilient-red-sea-reefs-offer-last-stand-for-corals/article65991661.ece>

Q.3) With reference to Tele Mental Health Assistance and Networking Across States (Tele-MANAS) consider the following statements:

1. It is launched to provide universal access to equitable, affordable and quality mental health care through tele-services under the National Mental Health Programme (NMHP).
2. It is launched to provide all access to affordable mental health care in every State/UT.

Select the correct answer using the codes given below;

- a) 1 only
- b) 2 only
- c) Both 1 and 2
- d) Neither 1 nor 2

Answer: C

Explanation –

Tele Mental Health Assistance and Networking Across States (Tele-MANAS) is launched to provide universal access to equitable, affordable and quality mental health care through tele-services under the National Mental Health Programme (NMHP). It is launched to provide all access to affordable mental health care in every State/UT. It will serve as the digital arm of the District Mental Health Programme.

Source: <https://www.thehindu.com/news/cities/bangalore/tele-manas-a-247-mental-health-facility-launched/article65993264.ece>

Q.4) With reference to World Economic Forum (WEF) consider the following statements:

1. It does not have power on its own to make decisions but it influences business policy and political decisions.
2. It's headquartered at New York.

Which of the statements given above is/are correct?

- a) 1 only
- b) 2 only
- c) Both 1 and 2
- d) Neither 1 nor 2

Answer: A

Explanation-

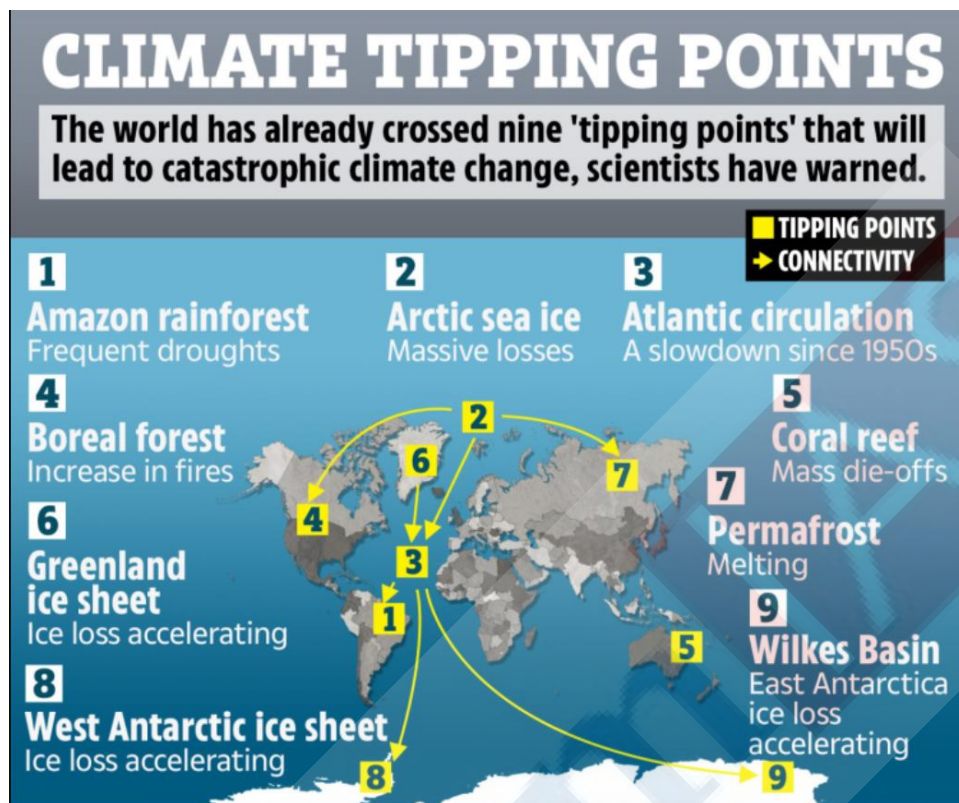
Statement 1: World Economic Forum (WEF) does not have power on its own to make decisions but it has power and influences business policy and political decisions.

Statement 2: The statement is incorrect. It's headquartered at Geneva, Switzerland. Source: <https://www.thehindu.com/news/cities/Hyderabad/world-economic-forum-recognition-for-dr-reddys-plant/article65996193.ece>

Q.5) Which of the following is not a climate tipping point?

- a) Frequent droughts in Amazon Rainforest
- b) Large scale death of Coral Reefs
- c) Increasing La-Nina Effect
- d) Thawing Permafrost

Answer: C



Source: [Down To Earth](#)

Q.6) With reference to Banks assets and liabilities, consider the following statements;

1. Generally, bank's assets have a short maturity.
2. Bank's liabilities have a long maturity.

Which of the statements given above is/are correct?

- a) 1 only
- b) 2 only
- c) Both 1 and 2
- d) Neither 1 nor 2

Answer: D

Savers always want access to at least some part of their savings for unexpected use; this is also called the need for liquidity. They want the ability to pull out money when they need it.

Borrowers need the money for a much longer time. Borrowers cannot function if the money can be demanded back at short notice.

So, the bank's assets have a long maturity, because it promises borrowers that they will not need to pay back their loans early. On the other hand, the bank's liabilities have a short maturity; depositors can access their money whenever they want.

Source: [Indian Express](#)

Q.7) Which of the following is/are the benefits of e-rupee?

1. Reduce the cost of physical cash management.
2. Provide financial stability in the economy.
3. Make cross-border transactions faster and far less costly.

Select the correct answer from the codes given below;

- a) 1 and 2 only
- b) 2 and 3 only
- c) 1 and 3 only
- d) 1, 2 and 3

Answer: D

Source: [Business Standard](#)

Q.8) Mahakal Lok Corridor is located in which of the following state?

- a) Karnataka
- b) Gujarat
- c) Madhya Pradesh
- d) Maharashtra

Answer: C

The project — Mahakal Maharaj Mandir Parisar Vistar Yojna — is a comprehensive development plan for the expansion, beautification and decongestion of the Mahakaleshwar temple premises. The first phase of the project entails the development of Mahakal Lok Corridor with a visitor plaza having two entrances — Nandi Dwaar and Pinaki Dwaar.

A 900-metre-long pedestrian corridor has been built connecting Mahakal temple to 108 murals and 93 statues of Lord Shiva along the way

Source: [Indian Express](#)

Q.9) With reference to Automotive Research Association of India (ARAI), consider the following statements;

1. ARAI assists the government in the formulation of automotive industry standards and harmonisation of regulations.
2. It is an autonomous body affiliated with the Ministry of Heavy Industries.

Which of the statements given above is/are correct?

- a) 1 only
- b) 2 only
- c) Both 1 and 2
- d) Neither 1 nor 2

Answer: C

Statement 1 is correct: The ARAI currently offers a range of certification and homologation services for automotive vehicles, systems, and components. It also assists the government in the formulation of automotive industry standards and harmonisation of regulations, alongside helping establish vehicle inspection and certification centres across the country.

Statement 2 is correct: It is an autonomous body affiliated with the Ministry of Heavy Industries.

Source: [Indian Express](#)

10 PM Compilation for the Month of October, (Second Week) 2022

Q.10) With reference to Vulture Conservation, consider the following statements;

1. Vultures are slow breeders and so the survival of every individual is very crucial for conservation.
2. Vultures are famous for their voice box and their singing.
3. Vultures do not carry food; instead, they regurgitate food and feed their young ones.

Which of the statements given above is/are correct?

- a) 1 and 2 only
- b) 2 and 3 only
- c) 1 and 3 only
- d) 1, 2 and 3

Answer: C

Statement 1 is correct: Vultures are slow breeders and so the survival of every individual is very crucial.

Statement 2 is incorrect: Vultures don't have a voice box, and so they cannot sing. They communicate via grunts and hisses.

Statement 3 is correct: They do not carry food; instead, they regurgitate food and feed their young ones.

Source: [DTE](#)

PRELIMS

Q.1) With reference to Interpol consider the following statements:

1. It is the organisation that enables member countries to share and access data on crimes and criminals.
2. National Central Bureau of the Interpol sits in the Home Ministry in India.
3. A Red Notice of Interpol it is an international arrest warrant.

Which of the statements given above are correct?

- a) 1 and 2 only
- b) 1 and 3 only
- c) 2 and 3 only
- d) 1, 2 and 3

Answer: A

Explanation –

Statement 1: The Interpol, or International Criminal Police Organization is an organisation that enables member countries to share and access data on crimes and criminals.

Statement 2: Interpol has a National Central Bureau (NCB) in each member country, which is the central point of contact for both the general secretariat and the other NCBs around the world. Each NCB is run by police officials of that country, and usually sits in the government ministry responsible for policing. (Home Ministry in India.)

Statement 3: The statement is incorrect. A red Notice issue by Interpol is only an international wanted persons' notice and it is not an international arrest warrant.

Source: <https://indianexpress.com/article/explained/everyday-explainers/gurpatwant-singh-pannun-interpol-red-corner-notice-explained-8204197/>

Q.2) Which of the following Indian states does not share border with Myanmar?

- a) Arunachal Pradesh
- b) Nagaland
- c) Manipur
- d) Tripura

Answer: D

Explanation – There are four states that share border with Myanmar. They are - Arunachal Pradesh, Nagaland, Manipur and Mizoram.

Source: <https://indianexpress.com/article/world/myanmar-aung-su-kyi-convictions-prison-term-8203614/>

Q.3) With reference to 'Tactical Weapons' consider the following statements:

1. Tactical weapons are designed to accomplish more limited and immediate military goals that win a battle.
2. They are many times larger than conventional bombs.

Which of the statements given above is/are correct?

- a) 1 only
- b) 2 only
- c) Both 1 and 2
- d) Neither 1 nor 2

Answer: C

Explanation-

Tactical weapons are designed to accomplish more limited and immediate military goals that win a battle. They are many times larger than conventional bombs.

10 PM Compilation for the Month of October, (Second Week) 2022

Source: <https://timesofindia.indiatimes.com/world/europe/explainer-what-makes-a-nuclear-weapon-tactical/articleshow/94804553.cms>

Q.4) Which of the following will be the implication of the economic growth cut by the IMF on the Indian economy?

- a) It will lead to increase in exports.
- b) It will lead to disguised unemployment.
- c) It will lead to increase in the taxes by the government.
- d) It will lead to increase in the inflation along with the increase in price of basic commodities.

Answer: C

Explanation –

IMF has cut the economic growth of India by a significant margin in its World Economic Outlook. The economic growth of India has been cut from 7.4 percent to 6.8 percent projection for the fiscal year of 2022. This will lead to increase in the inflation along with the increase in price of basic commodities.

Source: [DNA Explainer: Why has IMF announced global growth cuts? Know its impacts on Indian economy, inflation \(dnaindia.com\)](https://dnaindia.com)

Q.5) With reference to Mainstreaming Biodiversity, consider the following statements;

- 1. It is the process of embedding biodiversity considerations into policies, strategies, and practices to promote the conservation and sustainable use of natural resources.
- 2. The role of forests in maintaining biodiversity is explicitly recognised by the United Nations Strategic Plan for Forests 2017–2030.

Which of the statements given above is/are correct?

- a) 1 only
- b) 2 only
- c) Both 1 and 2
- d) Neither 1 nor 2

Answer: C

Statement 1 is correct: It is the process of embedding biodiversity considerations into policies, strategies, and practices to promote the conservation and sustainable use of natural resources.

Statement 2 is correct: The role of forests in maintaining biodiversity is explicitly recognised by the United Nations Strategic Plan for Forests 2017–2030.

Source: [DTE](https://dte.org)

Q.6) With reference to Geospatial Energy Map of India, consider the following statements;

- 1. It will be useful in planning and making investment decisions.
- 2. It has been developed by Geological Survey of India.

Which of the statements given above is/are correct?

- a) 1 only
- b) 2 only
- c) Both 1 and 2
- d) Neither 1 nor 2

Answer: A

Statement 1 is correct: It will be useful in planning and making investment decisions. It will also aid in disaster management using available energy assets.

10 PM Compilation for the Month of October, (Second Week) 2022

Statement 2 is incorrect: It has been developed by NITI Aayog in collaboration with Indian Space Research Organization (ISRO).

Source: [PIB](#)

Q.7) Which of the following is/are the advantages of flex-fuel vehicles?

1. Inexpensive upgradation of existing vehicles is feasible.
2. It can reduce oil import bill.
3. They offer a better economy for consumers.

Select the correct answer from the codes given below;

- a) 1 and 2 only
- b) 2 and 3 only
- c) 1 and 3 only
- d) 1, 2 and 3

Answer: B

Upgrading existing vehicles to run on high blend of ethanol fuel, however, is possible but expensive and not considered feasible. **Statement 1 is incorrect:**

Flex-fuel vehicles are seen as a one-shot solution for multiple problems—pollution, oil import bill and glut in sugar production.

Flex fuel vehicles bring down India's crude oil import bill.

With a much lower cost of running, they also offer a better economy for consumers.

Source: [PIB](#)

Q.8) With reference to Indian Monsoon, consider the following statements;

1. The India Meteorological Department (IMD) has never revised the expected dates of onset and withdrawal of the monsoon.
2. Extreme rainfall events are increasing both in intensity and frequency in India.

Which of the statements given above is/are correct?

- a) 1 only
- b) 2 only
- c) Both 1 and 2
- d) Neither 1 nor 2

Answer: B

Statement 1 is incorrect: Three years ago, the India Meteorological Department (IMD) had revised the expected dates of onset and withdrawal of the monsoon for several regions of the country. The withdrawal dates for North, Northwest and Central India were pushed back by one to two weeks to account for the trends witnessed over the last 50 years.

Statement 2 is correct: Extreme rainfall events are increasing both in intensity and frequency in India.

Source: [Indian Express](#)

Q.9) Mainstreaming Biodiversity in Forestry Report was released by which of the following organisation?

- a) Global Environment Facility
- b) Food and Agriculture Organization
- c) United Nations Environment Programme
- d) International Carbon Action Partnership

Answer: B

The Food and Agriculture Organization has recently released a report titled “Mainstreaming Biodiversity in Forestry Report.”

Source: [DTE](#)

Q.10) With reference to Supreme Court’s collegium, consider the following statements;

- 1. Generally, one or more of the four senior judges in the collegium would be a potential CJI candidate.
- 2. If the successor Chief Justice is not one of the four senior-most puisne Judges, he must invariably be made part of the collegium.

Which of the statements given above is/are incorrect?

- a) 1 only
- b) 2 only
- c) Both 1 and 2
- d) Neither 1 nor 2

Answer: D

Statement 1 is correct: Generally, one or more of the four senior judges in the collegium would be a potential CJI candidate.

Statement 2 is correct: If the successor Chief Justice is not one of the four senior-most puisne Judges, he must invariably be made part of the collegium.

Source: [Indian Express](#)

PRELIMS

Q.1) With reference to Technology Development Fund (TDF) scheme consider the following statements:

1. It encourages the industry to innovate and develop defence technologies in order to make India Atmanirbhar in defence.
2. The scheme is being executed by ISRO.

Which of the statements given above is/are correct?

- a) 1 only
- b) 2 only
- c) Both 1 and 2
- d) Neither 1 nor 2

Answer: A

Explanation –

Statement 1: Technology Development Fund (TDF) scheme encourages the industry to innovate and develop defence technologies in order to make India Atmanirbhar in defence.

Statement 2: The statement is incorrect. The TDF scheme is being executed by Defence Research and Development Organisation (DRDO).

Source: [The Hindu](#)

Q.2) Consider the following statements with respect to Slender loris:

1. They are arboreal and spend most of their life on trees.
2. They have been listed in Schedule II of the Wildlife (Protection) Act of India, 1972.

Select the correct answer using the codes given below:

- a) 1 only
- b) 2 only
- c) Both 1 and 2
- d) Neither 1 nor 2

Answer: A

Explanation –

Statement 1: Slender loris are nocturnal animals and native to India and Sri Lanka. They are arboreal and spend most of their life on trees.

Statement 2: The statement is incorrect. They have been listed in Schedule I of the Wildlife (Protection) Act of India, 1972 and listed as endangered by the International Union for Conservation of Nature (IUCN).

Source: [Hindustan Times](#)

10 PM Compilation for the Month of October, (Second Week) 2022

Q.3) With reference to World Wildlife Fund (WWF) consider the following statements:

1. It is an international non-governmental organization.
2. It is the world's largest conservation organization.
3. Global Environment Outlook report is published by WWF.

Which of the statements given above are correct?

- a) 1 and 3 only
- b) 1 and 2 only
- c) 2 and 3 only
- d) 1, 2 and 3

Answer: B

Explanation-

World Wildlife Fund (WWF) is an international non-governmental organization. It is the world's largest conservation organization. It was founded in 1961 and has its headquarter at Gland (Switzerland). Statement 3 is incorrect. Global Environment Outlook is published by United Nations Environment Programme (UNEP).

Source: [The Hindu](#)

Q.4) With reference to International Monetary Fund (IMF) consider the following statements:

1. It is a specialized agency of UN.
2. It provides financial support and resources to the member countries to meet short term and medium-term Balance of Payments (BOP) problems.

Select the correct answer using the codes given below:

- a) 1 only
- b) 2 only
- c) Both 1 and 2
- d) Neither 1 nor 2

Answer: C

Explanation -

Statement 1: International Monetary Fund (IMF) is a specialized agency of UN.

Statement 2: It provides financial support and resources to the member countries to meet short term and medium-term Balance of Payments (BOP) problems.

Source: [Times of India](#)

Q.5) Which of the following temples is not built during the reign of the Cholas?

- a) Brihadeeshwara Temple in Thanjavur
- b) Gangai konda Chozhapuram temple in Gangai konda Chozhapuram.
- c) Airavateswara Temple in Dharasuram
- d) Meenakshi Temple in Madurai

Answer: D

Brihadeeshwara Temple in Thanjavur was done by Raja Raja I. Similarly, Gangai konda Chozhapuram was built by Rajendra I, and the Airavateswara Temple at Dharasuram was done by Rajaraja III.

Pandayan Emperor Sadayavarman Kulasekaran I built the Meenakshi Temple in Madurai.

Source: [The Hindu](#)

10 PM Compilation for the Month of October, (Second Week) 2022

Q.6) Which of the following is/are the correct about Grey Slender loris?

1. It is commonly found in Savannah landscapes.
2. It is a nocturnal and slow-moving animal.
3. The species acts as a biological predator of pests in agricultural crops and benefits farmers.

Select the correct answer from the codes given below;

- a) 1 and 2 only
- b) 2 and 3 only
- c) 1 and 3 only
- d) 1, 2 and 3

Answer: B

It is commonly found in the tropical scrub and deciduous forests as well as the dense hedgerow plantations bordering farmlands of Southern India and Sri Lanka. **Statement 1 is incorrect:** The Grey slender loris is a nocturnal animal. It is also a slow-moving animal. It comes down into the bushes to feed and crosses open stretches of ground to enter isolated groves or to cross from one tree to another.

The species acts as a biological predator of pests in agricultural crops and benefits farmers.

Source: [The Hindu](#)

Q.7) With reference to Committee of Parliament on Official Language, consider the following statements;

1. Unlike the other Parliamentary panels (constituted by the Parliament), this Committee is constituted by the Home Ministry.
2. The Committee submits its report to the Parliament.

Which of the statements given above is/are correct?

- a) 1 only
- b) 2 only
- c) Both 1 and 2
- d) Neither 1 nor 2

Answer: A

Statement 1 is correct: Unlike the other Parliamentary panels (constituted by the Parliament), this Committee is constituted by the Home Ministry.

Statement 2 is incorrect: The panel submits its report to the President, not to Parliament like other panels.

Source: [Indian Express](#)

Q.8) Living Planet Report was released by which of the following organization?

- a) United Nations Environment Programme
- b) World Wildlife Fund (WWF)
- c) Natural Resources Defense Council
- d) Global Environment Facility

Answer: B

Recently, the World Wildlife Fund (WWF) released the Living Planet Report. The report measures how species are responding to pressure in the environment due to biodiversity loss and climate change.

Source: [Indian Express](#)

10 PM Compilation for the Month of October, (Second Week) 2022

Q.9) With reference to Sloth Bear, consider the following statements;

1. Sloth bears are very fond of honey, hence their alternative name of “honey bear”
2. Sloth bears hibernate during winter.

Which of the statements given above is/are correct?

- a) 1 only
- b) 2 only
- c) Both 1 and 2
- d) Neither 1 nor 2

Answer: A

Statement 1 is correct: Sloth bears are very fond of honey, hence their alternative name of “honey bear”.

Statement 2 is incorrect: Sloth bears do not hibernate.

Source: [The Hindu](#)

Q.10) India’s first slender loris sanctuary is located in which of the following state?

- a) Rajasthan
- b) Gujarat
- c) Maharashtra
- d) Tamil Nadu

Answer: D

In a first in the country, the Tamil Nadu government has notified the **Kaduvur slender loris sanctuary**. The sanctuary will cover 11,806 hectares in Karur and Dindigul districts.

Source: [The Hindu](#)

PRELIMS

Q.1) With reference to snow leopard consider the following statements:

1. They are the top predator in the food web of mountain ecosystem.
2. They are found in Hemis National Park.
3. They are listed as endangered in the IUCN Red Data Book.

Which of the statements given above are correct?

- a) 1 and 2 only
- b) 2 and 3 only
- c) 1 and 3 only
- d) 1, 2 and 3

Answer: A

Explanation –

Snow leopard are the top predator in the food web of mountain ecosystem and act as an indicator of the health of the mountain ecosystem. They are found in Hemis National Park in Ladakh.

Statement 3 is incorrect. Snow leopard are listed as vulnerable in the IUCN Red Data Book.

Source: [The Hindu](#)

Q.2) Namdapha National Park is located in –

- a) Assam
- b) Andhra Pradesh
- c) Arunachal Pradesh
- d) Mizoram

Answer: C

Explanation –

Namdapha National Park is located in Arunachal Pradesh. It is a biodiversity hotspot in India. It is the fourth largest national park of India.

Source: [The Hindu](#)

Q.3) World Economic Outlook (WEO) report is published by –

- a) World Economic Forum
- b) World Bank
- c) World Trade Organization
- d) International Monetary Fund

Answer: D

explanation –

World Economic Outlook (WEO) is published by International Monetary Fund. it publishes two WEOs each year (in April and October) as well as two updates (January and July) to policymakers around the globe.

Source: [The Indian Express](#)

Q.4) A situation in which the inflation rate is increasing, the economic growth rate slows and unemployment remains steadily high is called –

- a) Deflation
- b) Hyperinflation
- c) Stagflation
- d) Reflation

Answer: C

Explanation –

Stagflation is a situation in which the inflation rate is increasing, the economic growth rate slows, and unemployment remains steadily high. It is also known as recession inflation. It creates a problem for the policy maker as to lower the inflation rate may worsen the unemployment situation.

Source: [The Indian Express](#)

Q.5) Consider the following statements

- 1. He was responsible for starting India's first rural university, Chitarkoot Gramodya Vishwavidyalaya.
- 2. He was posthumously awarded the Bharat Ratna.
- 3. He was the founder of Deendayal Research Institute (DRI) situated at Chitrakoot.

Which of the following personality is described in the statements above?

- a) C. N. R. Rao
- b) Gulzarilal Nanda
- c) Nanaji Deshmukh
- d) Pandurang Vaman Kane

Answer: C

Source: [TOI](#)

Q.6) With reference to Online gaming, consider the following statements;

- 1. Online gaming is a state subject.
- 2. State governments can completely block offshore betting sites.

Which of the statements given above is/are correct?

- a) 1 only
- b) 2 only
- c) Both 1 and 2
- d) Neither 1 nor 2

Answer: A

Statement 1 is correct: Online gaming so far has been a state subject. However, state governments have said they find it extremely difficult to enforce certain rules like geo-blocking certain apps or websites within the territory of their state.

Statement 2 is incorrect: State governments do not have enough blocking powers like the Centre to issue blocking orders for offshore betting sites.

Source: [Indian Express](#)

Q.7) Which of the following is/are the benefits of paddy straw pelletisation?

1. Create employment opportunities for youth
2. Paddy Pellets can be mixed with coal in thermal power plants.
3. It can reduce carbon emissions.

Select the correct answer from the codes given below;

- a) 1 and 2 only
- b) 2 and 3 only
- c) 1 and 3 only
- d) 1, 2 and 3

Answer: D

Paddy straw pelletisation and torrefaction will help convert waste to wealth and provide job opportunities to rural youth in Punjab and Haryana.

Paddy straw made into pellets or torrefied can be mixed with coal in thermal power plants. This saves coal as well as reduces carbon emissions that would otherwise have been emitted were the straw burnt in the fields.

Source: [The Hindu](#)

Q.8) With reference to split verdict, consider the following statements;

1. A split verdict is passed when the Bench cannot decide one way or the other in a case, either by a unanimous decision or by a majority verdict.
2. Supreme Court cannot issue a split verdict.

Which of the statements given above is/are correct?

- a) 1 only
- b) 2 only
- c) Both 1 and 2
- d) Neither 1 nor 2

Answer: A

Statement 1 is correct: A split verdict is passed when the Bench cannot decide one way or the other in a case, either by a unanimous decision or by a majority verdict.

Statement 2 is incorrect: The Supreme Court recently delivered a split verdict in the Karnataka hijab ban case with one of the two judges on the Bench upholding the order of the Karnataka High Court validating the government's ban, and the other set aside the High Court ruling.

Now the matter was directed to be placed before the Chief Justice of India (CJI) for appropriate directions.

Source: [Indian Express](#)

Q.9) With reference to Athlete Biological Passport (ABP), consider the following statements;

1. It aims to detect the doping substance.
2. It monitors selected biological variables over time.

Which of the statements given above is/are correct?

- a) 1 only
- b) 2 only
- c) Both 1 and 2
- d) Neither 1 nor 2

Answer: B

Statement 1 is incorrect: It did not attempt to detect the doping substance or method. Instead, it works against doping through enhanced target testing and analysis, investigations, deterrence, and as indirect evidence for use of prohibited methods or substances.

Statement 2 is correct: It monitors selected biological variables over time to reveal the effects of doping.

Source: [PIB](#)

Q.10) With reference to doom loop, consider the following statements;

1. A doom loop is the circle of vulnerability where a country's banking system can be severely hurt by volatility in the economy.
2. A country is at risk of a doom loop when a shock to one part of its economic system is amplified by its effect on another.

Which of the statements given above is/are correct?

- a) 1 only
- b) 2 only
- c) Both 1 and 2
- d) Neither 1 nor 2

Answer: C

A doom loop is the circle of vulnerability where a country's banking system can be severely hurt by volatility in the economy. A country is at risk of a doom loop when a shock to one part of its economic system is amplified by its effect on another.

Source: [The Economist](#)

PRELIMS

Q.1) With reference to Competition Commission of India consider the following statements:

1. It is a statutory body of the Government of India responsible for enforcing the Competition Act, 2002.
2. It comprises four members and one chairperson.
3. The objectives of the commission are to promote and sustain competition and ensure freedom of trade in the markets of India.

Which of the statements given above are correct?

- a) 1 and 2 only
- b) 2 and 3 only
- c) 1 and 3 only
- d) 1, 2 and 3

Answer: C

Explanation –

Statement 1: Competition Commission of India (CCI) is a statutory body of the Government of India responsible for enforcing the Competition Act, 2002.

Statement 2: The statement is incorrect. The commission comprises six members and one chairperson and they are appointed by the central government.

Statement 3: The objectives of the commission are to promote and sustain competition, and ensure freedom of trade in the markets of India.

Source: [India Today](#)

Q.2) With reference to Black Magic consider the following statements:

1. Black Magic practices violates article 14 of the Indian Constitution.
2. Maharashtra was the first state to enact law against witchcraft.

Select the correct answer using the codes given below:

- a) 1 only
- b) 2 only
- c) Both 1 and 2
- d) Neither 1 nor 2

Answer: A

Explanation –

Statement 1: Black Magic practices violates article 14, 15 and 21 of the Indian Constitution.

Statement 2: The statement is incorrect. Bihar was the first state to enact law against witchcraft.

Source: [DNA](#)

10 PM Compilation for the Month of October, (Second Week) 2022

Q.3) Consider the following statements with respect to the island country Haiti:

1. It is a mountainous country that lies in Caribbean Sea.
2. Dominican Republic borders Haiti from the east.

Select the correct statements using the codes given below:

- a) 1 only
- b) 2 only
- c) Both 1 and 2
- d) Neither 1 nor 2

Answer: C

Explanation –

Haiti is a mountainous country that lies in Caribbean Sea. Dominican Republic borders Haiti from the east.

Source: [The Hindu](#)

Q.4) With reference to Global Hunger Index (GHI) consider the following statements:

1. It is released by the World Bank.
2. India's position has slipped in the recent GHI.
3. Child Stunting is one of the indicators used in the GHI.

Which of the statements given above are correct?

- a) 1 and 2 only
- b) 2 and 3 only
- c) 1 and 3 only
- d) 1, 2 and 3

Answer: B

Explanation –

Global Hunger Index (GHI) is jointly published by Concern Worldwide and Welthungerhilfe. India has slipped to the 107th position in the Global Hunger Index (GHI) in 2022, down from the 101st position in 2021. The GHI score is calculated on four indicators — undernourishment; child wasting child stunting and child mortality.

Source: [The Indian Express](#)

Q.5) Galapagos Archipelago is located in which of the following ocean?

- a) Indian Ocean
- b) Atlantic Ocean
- c) Pacific Ocean
- d) Arctic Ocean

Answer: C

The Galapagos Islands, spread over almost 60,000 sq km, are a part of Ecuador. These are located in the Pacific Ocean around 1,000 km away from the South American continent. According to a recent study, Cold ocean currents have sheltered the Galápagos Islands from global warming.

Source: [DTE](#)

10 PM Compilation for the Month of October, (Second Week) 2022

Q.6) With reference to Global Hunger Index, consider the following statements;

1. The GHI is an annual report and each set of GHI scores uses data from a 5-year period.
2. GHI scores are based on the values child stunting, child wasting and child mortality alone.

Which of the statements given above is/are correct?

- a) 1 only
- b) 2 only
- c) Both 1 and 2
- d) Neither 1 nor 2

Answer: A

Statement 1 is correct: The GHI is an annual report and each set of GHI scores uses data from a 5-year period. The 2022 GHI scores are calculated using data from 2017 through 2021.

Statement 2 is incorrect: GHI scores are based on the values of four component indicators - undernourishment, child stunting, child wasting and child mortality.

Source: [The Hindu](#)

Q.7) Which of the following is/are correct about Conference on Interaction and Confidence Building Measures in Asia (CICA)?

1. It is a multinational forum for strengthening cooperation towards promoting peace, security and stability in Asia.
2. It is founded by China in 2002.
3. Only Asian Countries can become a member of CICA.

Select the correct answer from the codes given below;

- a) 1 and 2 only
- b) 2 and 3 only
- c) 1 and 3 only
- d) 1, 2 and 3

Answer: C

Statement 1 and 3 are correct: It is a multinational forum for strengthening cooperation towards promoting peace, security and stability in Asia. To be a member of CICA, a state must have at least a part of its territory in Asia. So far the CICA has 27 member countries, 9 observer states, and 5 international organizations.

Statement 2 is incorrect: CICA is founded by Kazakhstan's First President in 1992.

Source: [The Hindu](#)

Q.8) With reference to narrative terrorism, consider the following statements;

1. It is a part of a criminal conspiracy to spread terrorism by creating false narratives.
2. It can be booked under the provisions of the Indian Penal Code alone.

Which of the statements given above is/are correct?

- a) 1 only
- b) 2 only
- c) Both 1 and 2
- d) Neither 1 nor 2

Answer: A

Statement 1 is correct: It is a part of a criminal conspiracy to spread terrorism by creating false narratives.

10 PM Compilation for the Month of October, (Second Week) 2022

Statement 2 is incorrect: They can be booked under provisions of the Indian Penal Code and the Unlawful Activities (Prevention) Act.

Source: [The Hindu](#)

Q.9) With reference to the Unlawful Activities (Prevention) Act, consider the following statements;

1. The Court shall take cognizance of any offence committed under the Act without any government sanctions.
2. The Act empowers the Central Government to designate individuals as terrorists on certain grounds.

Which of the statements given above is/are correct?

- a) 1 only
- b) 2 only
- c) Both 1 and 2
- d) Neither 1 nor 2

Answer: B

Statement 1 is incorrect: Section 45(1) of the UAPA says no court shall take cognizance of any offence under the Act without the previous sanction of the central or state government or any officer authorised by them.

Statement 2 is correct: The Act empowers the Central Government to designate individuals as terrorists on certain grounds.

Source: [Indian Express](#)

Q.10) With reference to Rythu Bharosa Kendras (RBKs), consider the following statements;

1. The RBKs are unique seeds-to-sales, single-window service centres for farmers that have been set up across Andhra Pradesh.
2. RBKs facilitate interaction between farmers, agriculture scientists, and agriculture extension officers right at the village level.

Which of the statements given above is/are correct?

- a) 1 only
- b) 2 only
- c) Both 1 and 2
- d) Neither 1 nor 2

Answer: C

The RBKs are unique seeds-to-sales, single-window service centres for farmers that have been set up across Andhra Pradesh.

RBKs facilitate interaction between farmers, agriculture scientists, and agriculture extension officers right at the village level.

Source: [Indian Express](#)